

# ELECTROCARDIOGRAPHIC CASE

## "EPILEPSY" IN A YOUNG FEMALE

W S Teo

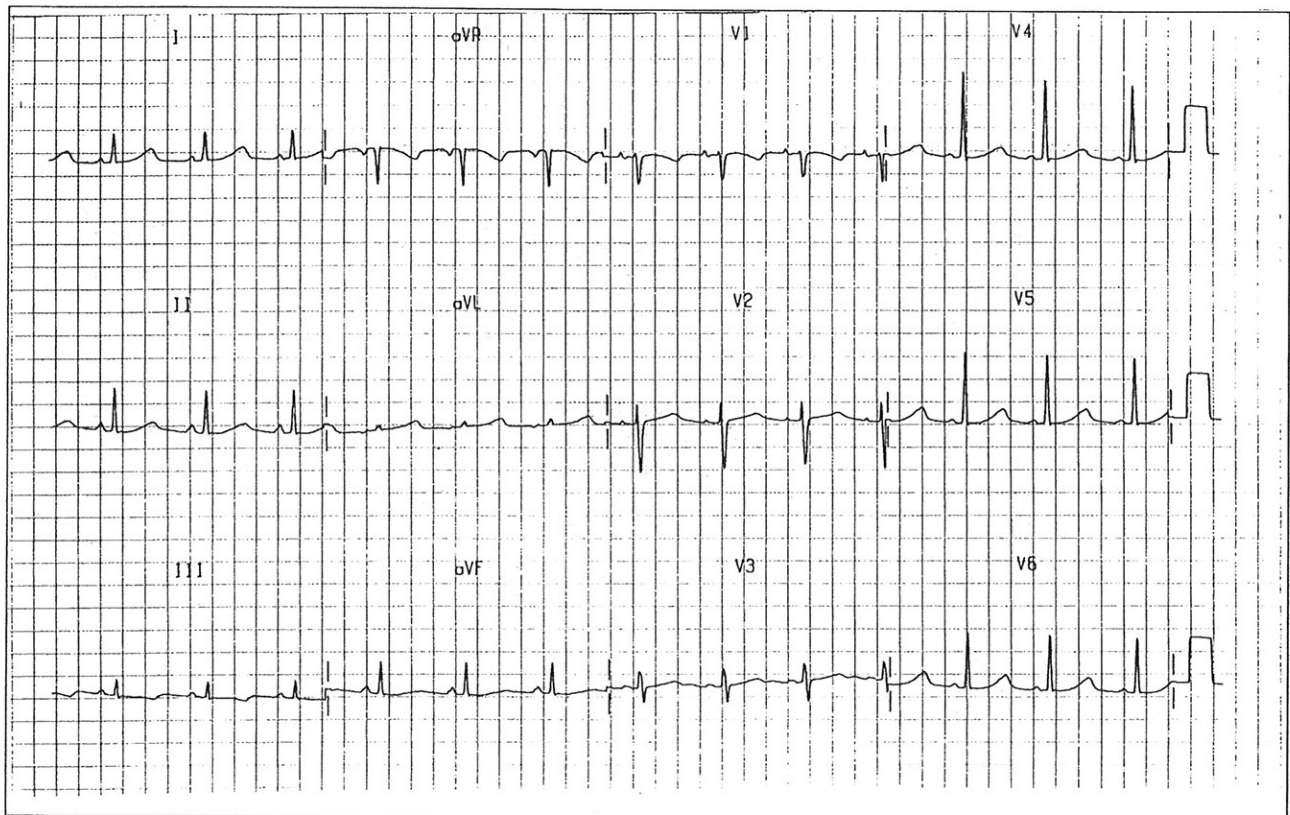
### CASE REPORT

*PLH, a 30-year-old female Chinese, presented with a history of recurrent fits 4 weeks after delivery of her third child. She has had a history of recurrent fits treated as for epilepsy, with phenytoin previously.*

*Her 12-lead electrocardiogram is shown in Fig 1. What is your diagnosis? (Answer on page 222)*

SINGAPORE MED J 1994; Vol 35: 204 & 222

Fig 1 – 12-lead electrocardiogram on admission



---

Department of Cardiology  
Singapore General Hospital  
Outram Road  
Singapore 0316

W S Teo, MBBS, M Med (Int Med), MRCP (UK), FAMS  
Consultant

---