

ELECTROCARDIOGRAPHIC CASE

ST ELEVATION IN INFERIOR LEADS - ECG LOCALISATION OF INFARCT RELATED ARTERY

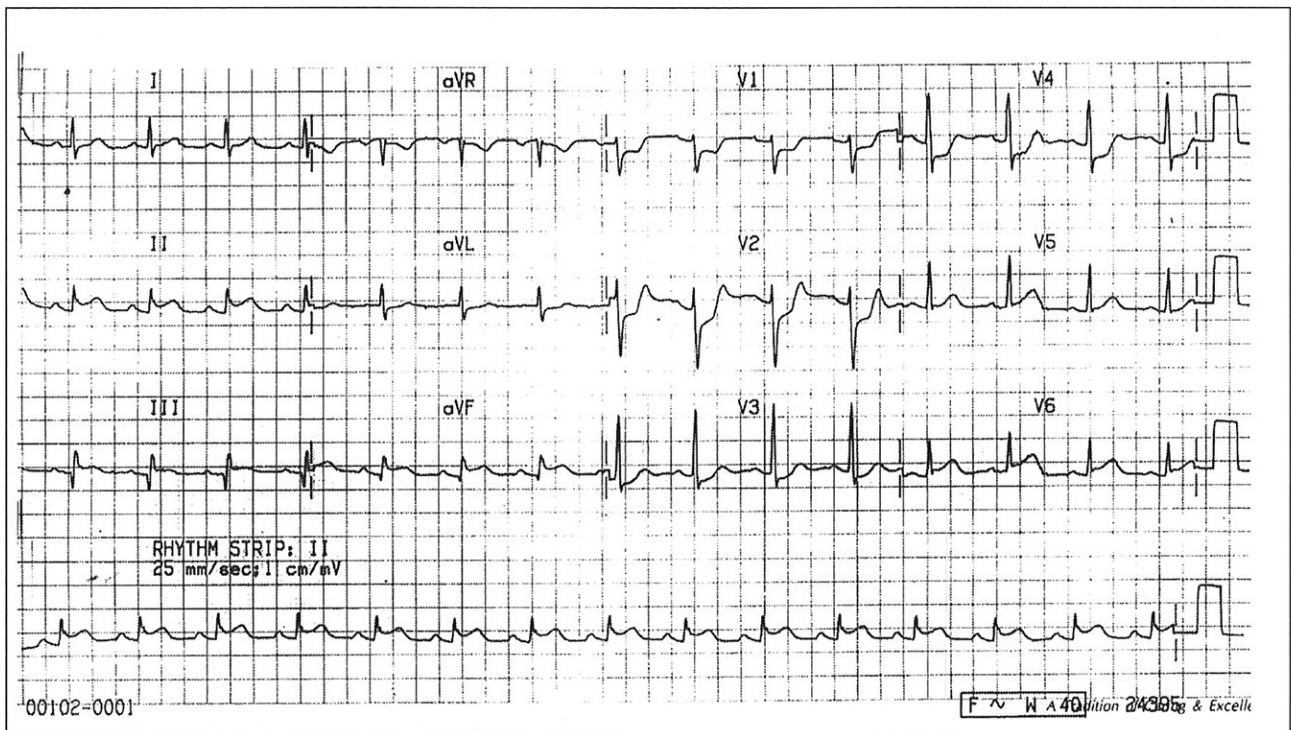
P P Goh, W S Teo, B L Chia

SINGAPORE MED J 1995; Vol 36: 325 & 339-340

CASE HISTORY

A 40-year-old man was admitted to the coronary care unit with crushing retrosternal pain of 4 hours' duration. On examination he was sweaty and in pain. Blood pressure was 120/70 mm Hg. First, second and fourth heart sounds were heard. There was no murmur or rub. Lungs were clear on auscultation. His ECG was as shown in Fig 1. What is the diagnosis? (Answer on Page 339-340)

Fig 1 - ECG on admission.



Department of Cardiology
Singapore General Hospital
Outram Road
Singapore 0316

P P Goh, MBBS, MRCP (UK)
Registrar

W S Teo, MBBS, M Med (Int Med), MRCP (UK), FAMS
Consultant

Department of Medicine
National University Hospital
5 Lower Kent Ridge Road
Singapore 0511

B L Chia, MBBS, FRACP, FAMS
Professor

Correspondence to : W S Teo