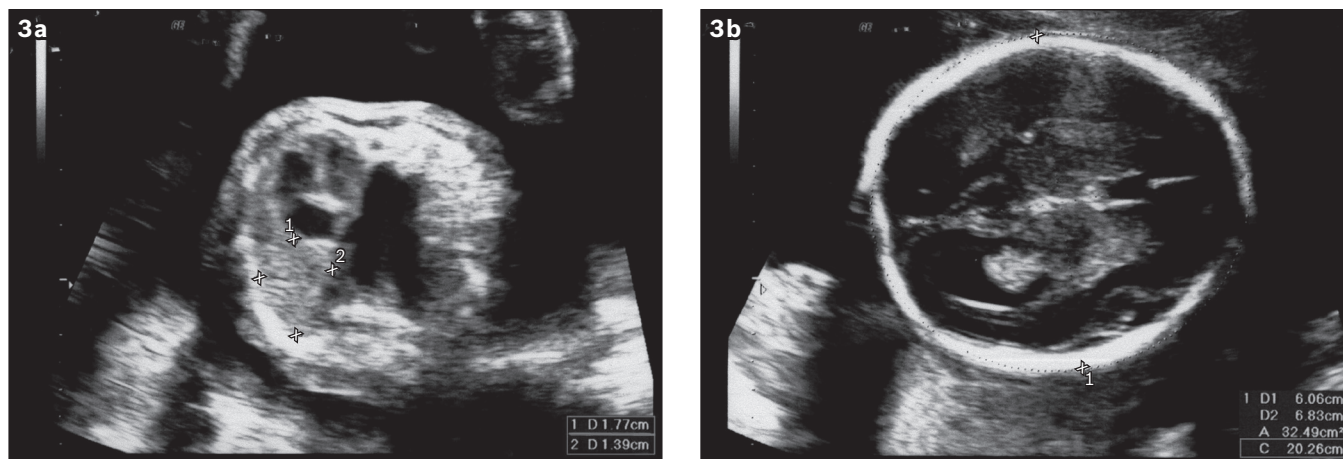


## Antenatally diagnosed congenital diaphragmatic hernia in Singapore: a five-year series

Lee SY, Tan KH

Singapore Med J 2013; 54(8): 432-436; <http://dx.doi.org/10.11622/smedj.2013149>

A digitally enhanced Fig. 3 is added for greater clarity. The approximate area of the lung was calculated by multiplying the two longest perpendicular diameters of the lung.



**Fig. 3** US images show the dimensions of the (a) lung and (b) brain. These images were used for the calculation of the lung-to-head ratio – dividing the area of the lung by the circumference of the head (i.e.  $[1.77 \times 1.39]/20.26 = 0.121$ ).

doi: 10.11622/smedj.2013229